

# Sample Data-Based Question – 2

(Documents slightly adjusted for examination purposes)

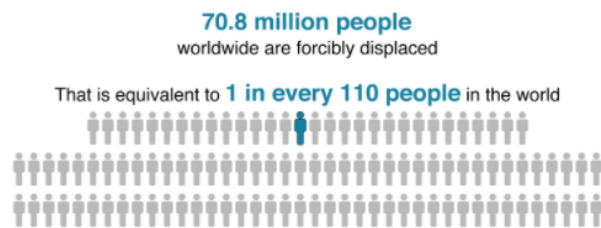
## Document A – BBC 'Data Journalism Team' Report. 24 September, 2019.

(Source: <https://www.bbc.com/news/world-49638793>)

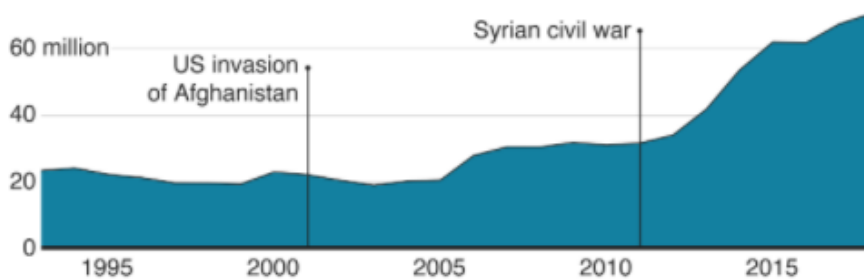


### Displaced people: Why are more fleeing home than ever before?

More than 35,000 people were forced to flee their homes every day in 2018 - nearly one every two seconds - taking the world's displaced population to a record 71 million.



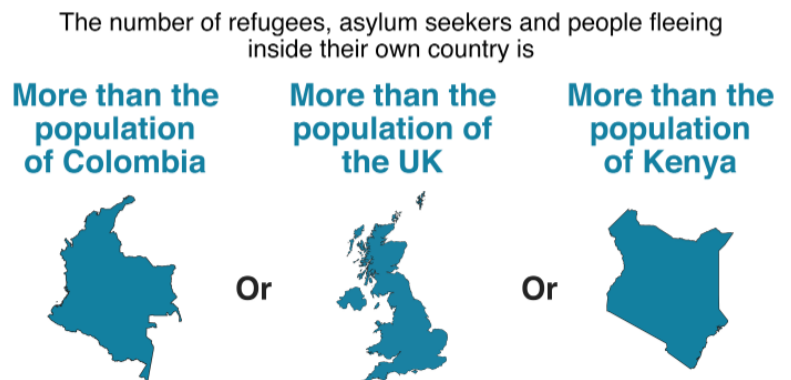
### Displaced population has tripled in the last 25 years



A total of 26 million people have fled across borders, 41 million are displaced within their home countries and 3.5 million have sought asylum - the highest numbers ever, according to UN refugee agency (UNHCR) figures.

Why are so many people being driven away from their families, friends and neighbourhoods? Devastating wars have contributed to the rise:

“Push factors”, such as conflict and violence, persecution and human rights violations are driving more and more men, women and children from their homes. In fact, the number of displaced people has doubled in the last 10 years, the UNHCR's figures show, with the devastating wars in Iraq and Syria causing many families to leave their communities. Conflict in the Democratic Republic of Congo (DRC), Yemen and South Sudan, as well as the flow of Rohingya refugees from Myanmar to Bangladesh, have also had a significant impact.



Source: UNHCR, UNRWA

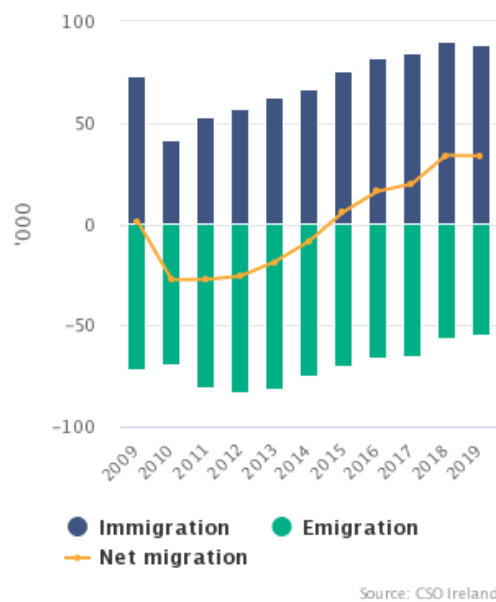
BBC

\*UNHCR = United Nations High Commissioner for Refugees

\*UNRWA = United Nations Relief and Works Agency for Palestine Refugees in the Near East

## Document B – Central Statistics Office - Population and Migration Estimates, April 2019

Figure 1 Migration



The combined effect of positive net migration and sustained natural increase resulted in an overall increase in the population of 64,500 for the second consecutive year, bringing the population estimate to 4.92 million in April 2019.

The number of immigrants to the State in the year to April 2019 is estimated to have decreased by 1.9% to 88,600 from 90,300 the previous year. The number of emigrants declined over the same period to 54,900 (-2.5%) from 56,300. These combined changes have resulted in net inward migration for Ireland in 2019 of 33,700.

Irish nationals experienced a return to net outward migration, falling to -2,100 in 2019 from the positive net inflow of 100 the previous year. Net inward migration among non-Irish nationals remained strong, increasing to 35,800 in 2019 from 33,900 in 2018.

### Summary

The number of births in the period was 61,200 while the number of deaths was 30,400, resulting in a natural increase of the population of 30,800.

Other main features of the 2019 figures are:

- Of the 88,600 people who immigrated to Ireland in the year to April 2019, 26,900 (30.4%) were estimated to be Irish nationals.
- Of the 54,900 people who emigrated from Ireland in the year to April 2019, 29,000 (52.8%) are estimated to be Irish nationals. This represents an increase of 700 (2.5%) on the year to April 2018 when 28,300 Irish nationals emigrated abroad.
- Non-Irish nationals from outside the EU continued to display strong migration flows, accounting for 30,600 (34.5%) of total immigrants and 11,200 (20.4%) of total emigrants.
- In April 2019, 53,000 (66.9%) of immigrants aged 15+ had a 3<sup>rd</sup> level qualification.
- In the year to April 2019, 19,700 immigrants arrived to live in Ireland from the UK, 11,600 emigrants left Ireland to live in the UK.
- In April 2019, there were 622,700 non-Irish nationals resident in Ireland accounting for 12.7% of the total population.

	Year ending	
	April 2018	April 2019
Immigration	90,300	88,600
Emigration	56,300	54,900
<b>Net migration</b>	<b>34,000</b>	<b>33,700</b>
<i>of which Irish nationals</i>	<i>100</i>	<i>-2,100</i>
<b>Natural increase</b>	<b>30,500</b>	<b>30,800</b>
<b>Population change</b>	<b>64,500</b>	<b>64,500</b>
<b>Population</b>	<b>4,857,000</b>	<b>4,921,500</b>

**Data-Based Questions (150 Marks) – Answer all questions**

(a) According to **Document A**, which is a more significant issue in quantitative terms - refugees displaced within their own borders or refugees crossing international borders. Your answer should provide quantitative data referring to **both** groups. (10 Marks)

---

---

---

---

---

---

---

(b) According to **Document B**, what are the most significant factors that account for the nett population growth of 64,500. In your answer provide relevant data referring to at least **two** categories of increase. (10 Marks)

---

---

---

---

---

---

---

(c) **In Document A**, which of the accompanying graphics best illustrates the overall argument of the article? Justify your answer by referring to the **strengths & weaknesses** of at least **two** of the graphics. (20 Marks)

---

---

---

---

---

---

---

---

---

---

---





